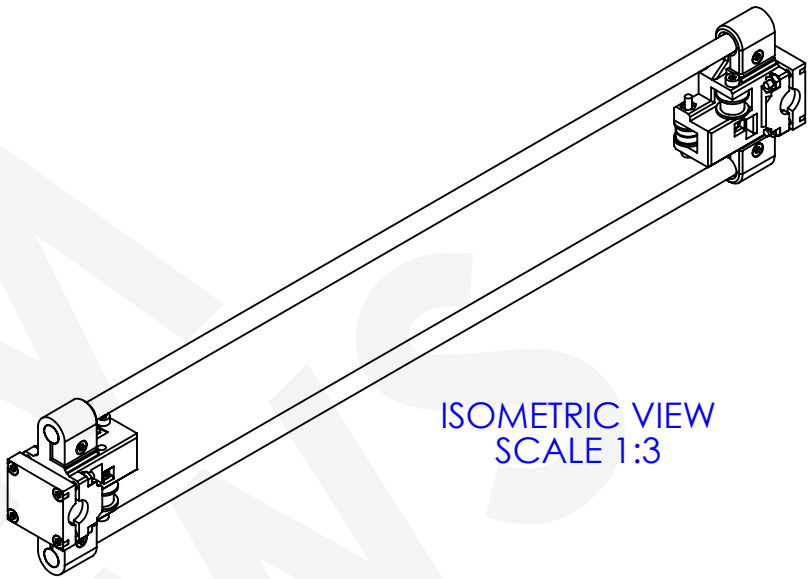
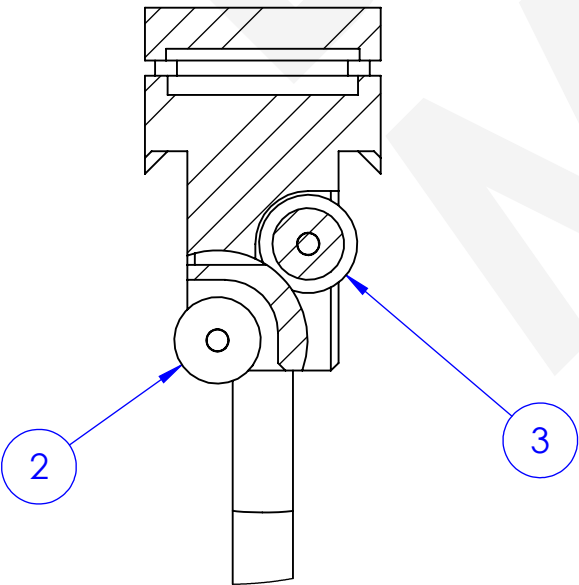
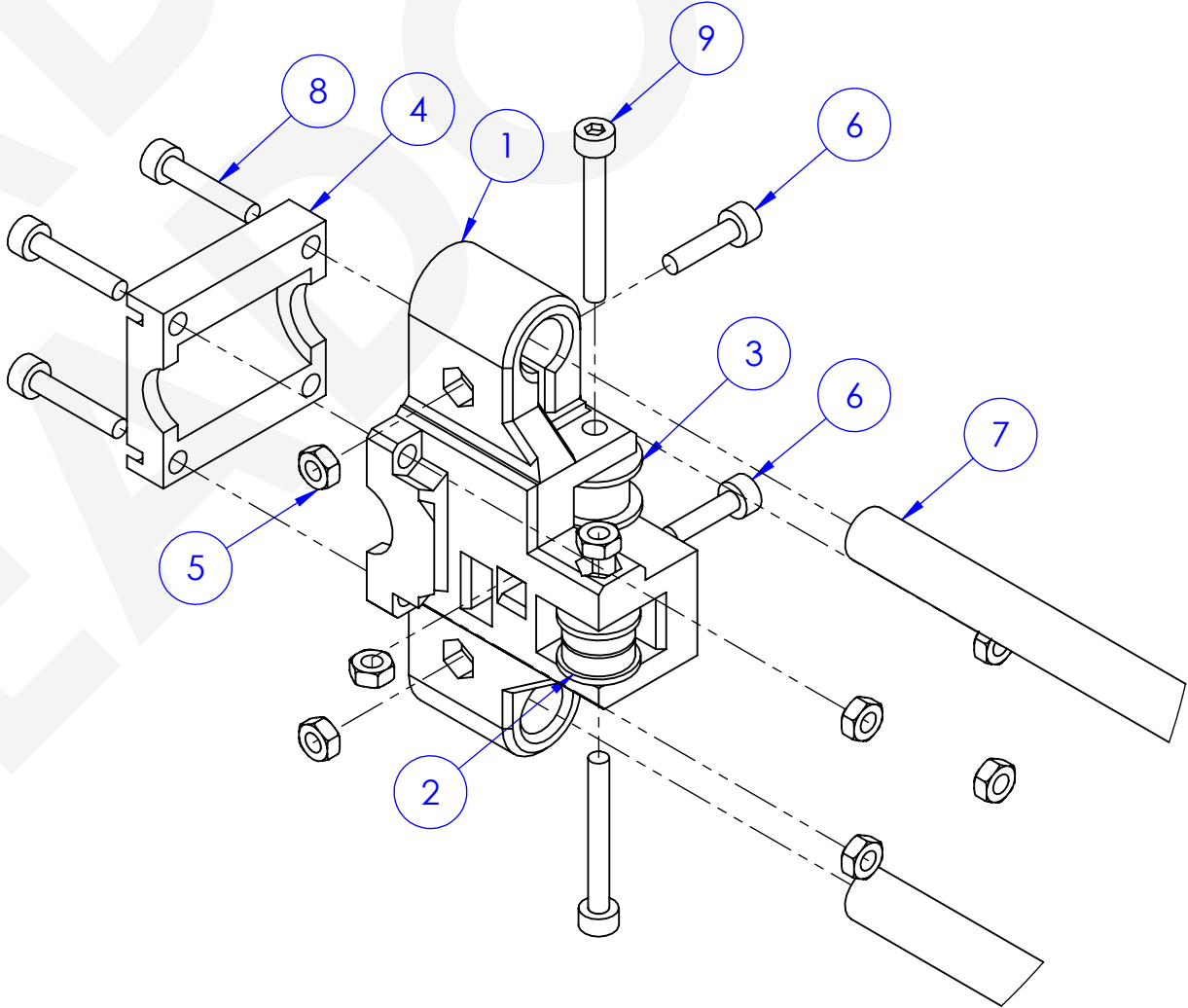
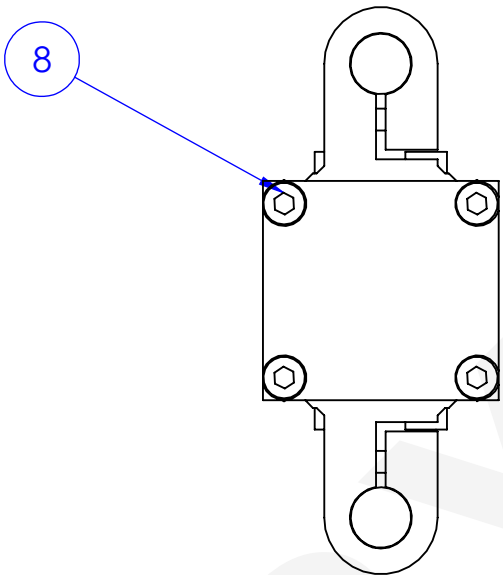


ITEM NO.	PART NUMBER	QTY.
1	X Gantry End_0.01	2
2	Mini Flanged Bearing_0.01	4
3	gt2 16t with bearing_0.01	2
4	X Gantry Bearing Clamp_0.01	2
5	M3 Nut	16
6	M3 x 12mm Socket Head Screw	4
7	IGUS 8mm precision rod 400mm_0.01	2
8	M3 x 16mm Socket Head Screw	8
9	M3 x 25mm Socket Head Screw	4

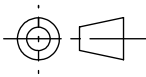


ISOMETRIC VIEW
SCALE 1:3



ADDITIONAL NOTES

- ITEM 4 SHOULD CLAMP AROUND BEARINGS IN Y AXIS ASSEMBLY

REVISION		1	DRAWN BY		A Meadows
DATE		01/03/2017		ENGINEER	AMEADOWS
CHANGE NOTES					
GENERAL NOTES					
REMOVE ALL SHARP EDGES AND BURRS					
PARTS TO BE CLEAN AND FREE FROM OIL AND GREASE					
THE USER OF THIS DRAWING IS RESPONSIBLE FOR ENSURING THEY HAVE THE LATEST ISSUE					
DO NOT SCALE. WORK TO DIMENSIONS ONLY					
DIMENSIONS IN MILLIMETRES					
TOLERANCES UNLESS OTHERWISE SPECIFIED	TOLERANCE HEIRARCHY IN DESCENDING ORDER		0-250mm	250-1000mm	1000+mm
	MACHINING		±0.1mm	±0.2mm	±0.5mm
	HOLE SIZE		+0.3 - 0 mm	+0.5 - 0 mm	+0.5 - 0 mm
	HOLE POSITION		±0.3mm	±0.5mm	±0.5mm
	FORM/PROFILE		±0.5mm	±1.0mm	±1.0mm
	ASSEMBLIES/FABRICATIONS		±0.5mm	±1.0mm	±2.0mm
	ANGLES		±0.3°	±0.1°	±0.1°
	MATERIAL	SIZE	SEE COMPONENT PARTS		
MATERIAL		SEE COMPONENT PARTS			
SPEC		SEE COMPONENT PARTS			
FINISH		None			
DRAWING SCALE		1:1			
DRAWING SIZE		A3			
TITLE: Gantry Assembly_0.01					
STATUS: Released					
ESTIMATED MASS	0.18Kg		SHEET 1 OF 1		