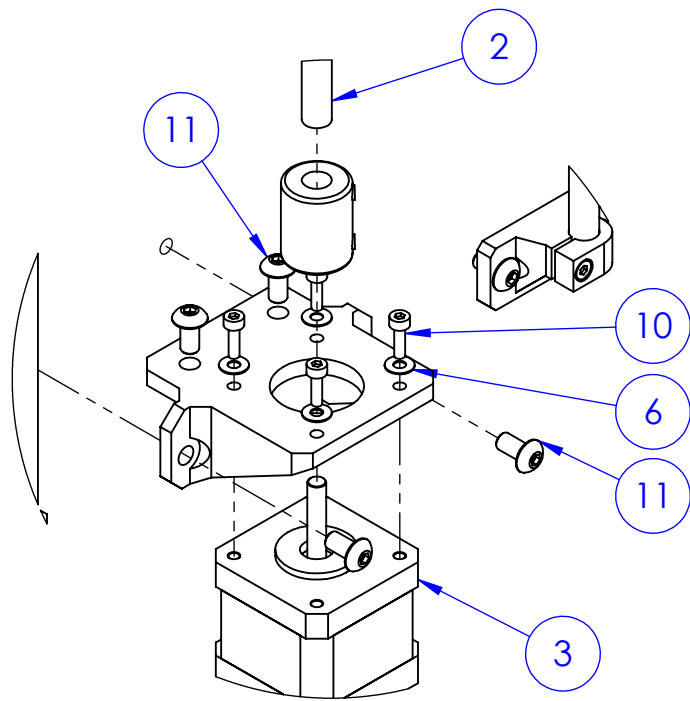
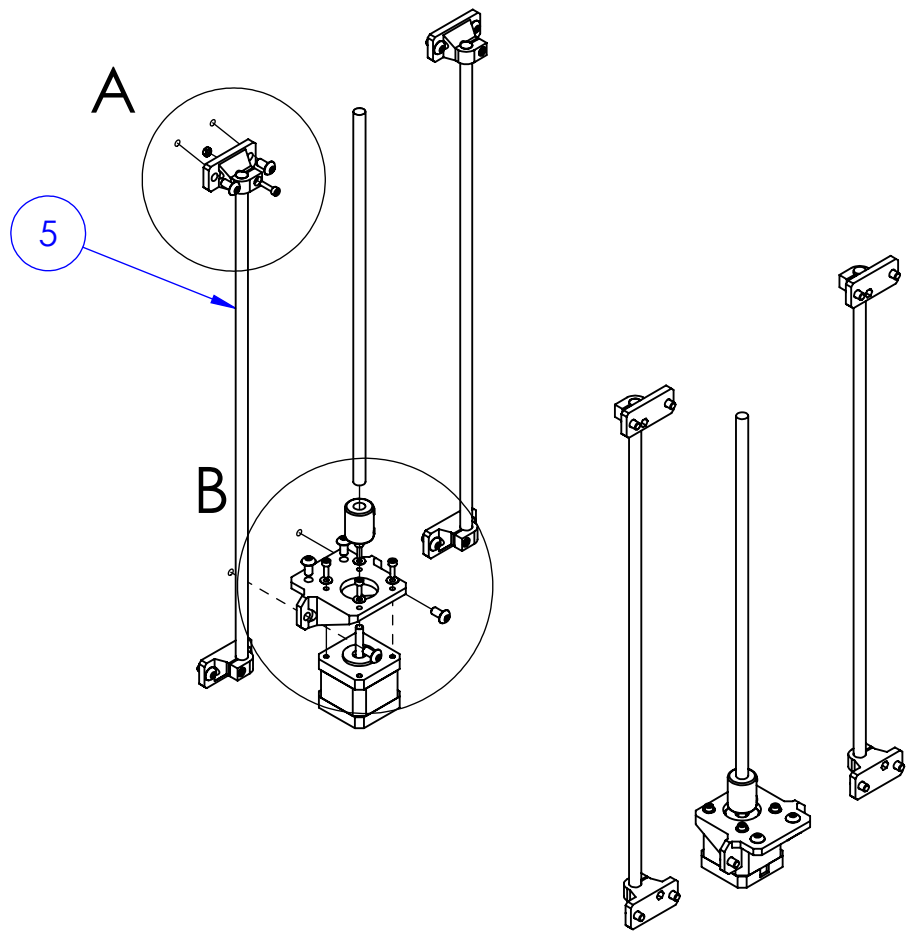
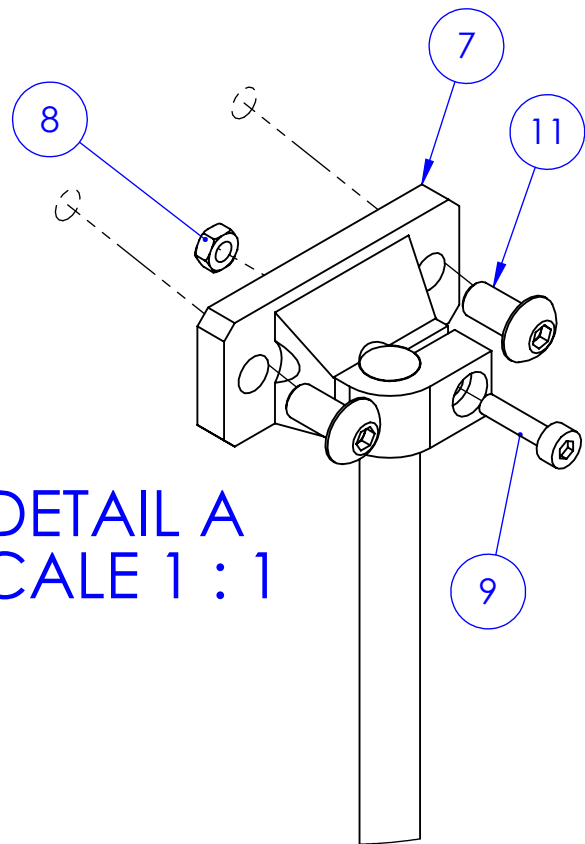


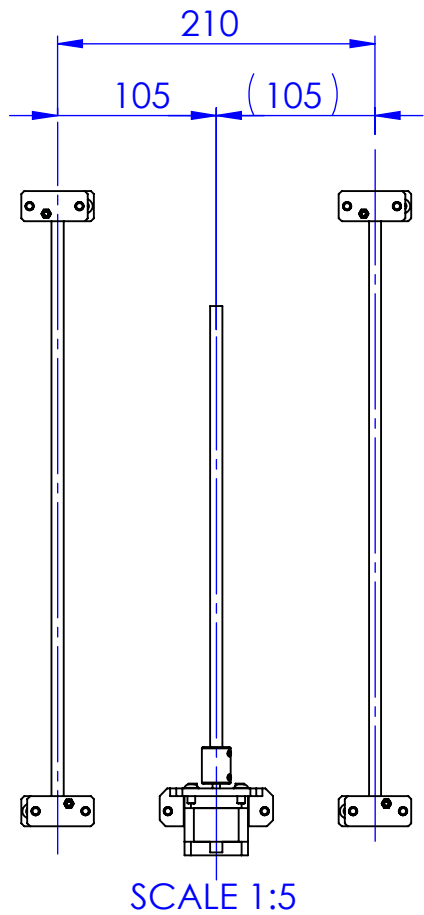
ITEM NO.	PART NUMBER	QTY.
1	Z Axis Stepper Mount_0.01	2
2	8mm Lead Screw 2 Start 300mm	2
3	nema17_0.01	2
4	Lead Screw Flexible Coupler_0.01	2
5	8mm precision rod 400mm_0.01	4
6	M3 washer_0.01	8
7	Z Axis 8mm Shaft Mount_0.01	8
8	M3 Nut	8
9	M3 x 12mm Socket Head Screw	8
10	M3 x 10mm Socket Head Screw	8
11	ISO 7380 - M5 x 10 - 10N	24



DETAIL B  
SCALE 1 : 2

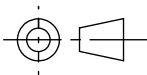


DETAIL A  
SCALE 1 : 1



SCALE 1:5

- NUTS SHOULD BE PRE ASSEMBLED TO FRAME
- TO BE ASSEMBLED DIRECTLY ONTO COMPLETED FRAME
- USING THE FRAME AS A REFERENCE, ENSURE Z AXIS SHAFT ARE PARALLEL AND VERTICAL.

REVISION	1	DRAWN BY	A Meadows	
DATE	01/03/2017	ENGINEER	AMEADOWS	
CHANGE NOTES				
GENERAL NOTES	<p>REMOVE ALL SHARP EDGES AND BURRS</p> <p>PARTS TO BE CLEAN AND FREE FROM OIL AND GREASE</p> <p>THE USER OF THIS DRAWING IS RESPONSIBLE FOR ENSURING THEY HAVE THE LATEST ISSUE</p> <p>DO NOT SCALE. WORK TO DIMENSIONS ONLY</p> <p>DIMENSIONS IN MILLIMETRES</p>			
TOLERANCES <small>UNLESS OTHERWISE SPECIFIED</small>	TOLERANCE HEIRARCHY IN DESCENDING ORDER	0-250mm	250-1000mm	1000+mm
	MACHINING	±0.1mm	±0.2mm	±0.5mm
	HOLE SIZE	$\begin{smallmatrix} +0.3 \\ -0 \end{smallmatrix}$ mm	$\begin{smallmatrix} +0.5 \\ -0 \end{smallmatrix}$ mm	$\begin{smallmatrix} +0.5 \\ -0 \end{smallmatrix}$ mm
	HOLE POSITION	±0.3mm	±0.5mm	±0.5mm
	FORM/PROFILE	±0.5mm	±1.0mm	±1.0mm
	ASSEMBLIES/FABRICATIONS	±0.5mm	±1.0mm	±2.0mm
	ANGLES	±0.3°	±0.1°	±0.1°
	MATERIAL	SIZE	SEE COMPONENT PARTS	
MATERIAL		SEE COMPONENT PARTS		
SPEC		SEE COMPONENT PARTS		
FINISH		None		
DRAWING SCALE		1:5		
DRAWING SIZE		A3		
TITLE: Z Axis Assembly_0.01				
STATUS: Released				
ESTIMATED MASS	0.38Kg	SHEET 1 OF 1		