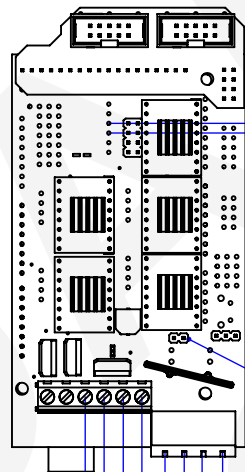


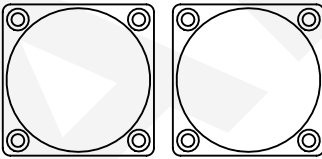
- CONNECT STEPPER MOTORS TO CONTROL BOARD AS NORMAL.
- USE 4 PIN DUPONT 0.1INCH (2.54MM) CONNECTORS
- CAT5 OR 24AWG WIRE CAN BE USED TO EXTEND IF NECESSARY.
- FOR LONG LENGTHS USE A 4 BRAID PLAIT TO KEEP WIRES TOGETHER AND REDUCE ELECTRICAL SIGNAL NOISE.
- RECOMMENDED TO HAVE A 50MM SECTION FOLLOWED BY THE REMAINDER TO ALLOW FOR EASY REPLACEMENT OR CHANGE IF NECESSARY.



THERMISTOR

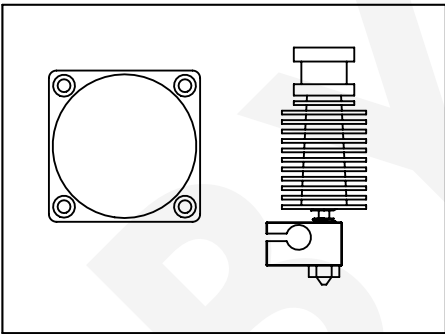
Silicon Heater

12V HEADER
CONNECT E3D
FAN HERE

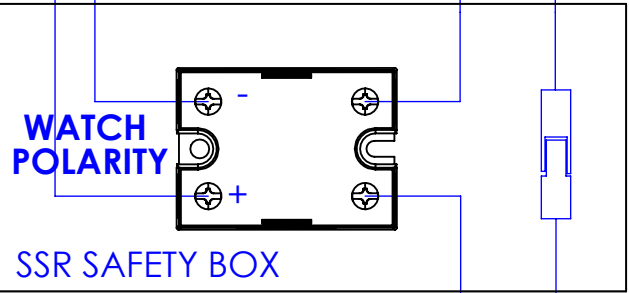


CONNECT PART COOLING
FANS AS NORMAL

LIVE NEUTRAL EARTH

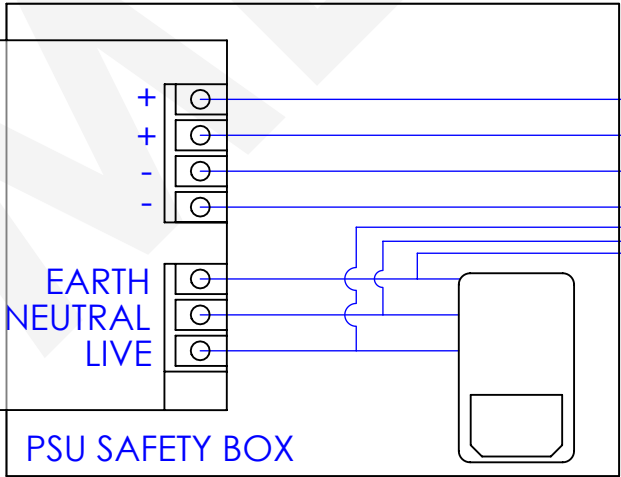


- E3D FAN, HEATER CARTRIDGE AND THERMOCOUPLE
- CONNECT AS NORMAL. ALL FIXINGS INCLUDED.
- EXTEND USING DUPONT CONNECTORS AND 24AWG WIRE. (CAT5 CABLES OR RAMPS CABLE SETS MIGHT HELP)



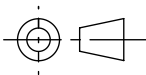
WATCH
POLARITY

SSR SAFETY BOX



EARTH
NEUTRAL
LIVE

PSU SAFETY BOX

REVISION	1	DRAWN BY	A Meadows	
DATE	01/07/2017	ENGINEER	A Meadows	
CHANGE NOTES				
GENERAL NOTES	<p>REMOVE ALL SHARP EDGES AND BURRS</p> <p>PARTS TO BE CLEAN AND FREE FROM OIL AND GREASE</p> <p>THE USER OF THIS DRAWING IS RESPONSIBLE FOR ENSURING THEY HAVE THE LATEST ISSUE</p> <p>DO NOT SCALE. WORK TO DIMENSIONS ONLY</p> <p>DIMENSIONS IN MILLIMETRES</p>			
TOLERANCES UNLESS OTHERWISE SPECIFIED	TOLERANCE HEIRARCHY IN DESCENDING ORDER	0-250mm	250-1000mm	1000+mm
	MACHINING	±0.1mm	±0.2mm	±0.5mm
	HOLE SIZE	+0.3 - 0 mm	+0.5 - 0 mm	+0.5 - 0 mm
	HOLE POSITION	±0.3mm	±0.5mm	±0.5mm
	FORM/PROFILE	±0.5mm	±1.0mm	±1.0mm
	ASSEMBLIES/FABRICATIONS	±0.5mm	±1.0mm	±2.0mm
	ANGLES	±0.3°	±0.1°	±0.1°
MATERIAL	SIZE	SEE COMPONENT PARTS		
	MATERIAL	SEE COMPONENT PARTS		
	SPEC	SEE COMPONENT PARTS		
	FINISH	None		
DRAWING SCALE		1:2		
DRAWING SIZE		A3		
TITLE: Electronics Assembly Instructions				
STATUS: Released				
ESTIMATED MASS	1.60Kg	SHEET 1 OF 1		

SEE VIDEO AT [YOUTUBE.COM/CRTvideo](https://www.youtube.com/CRTvideo) FOR DETAILS ON ASSEMBLY