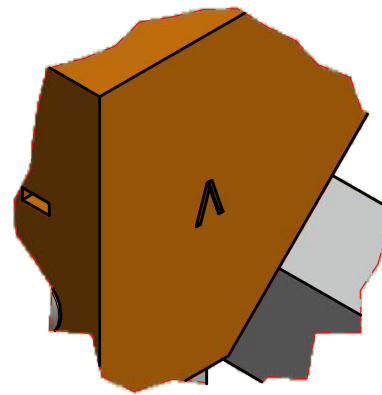
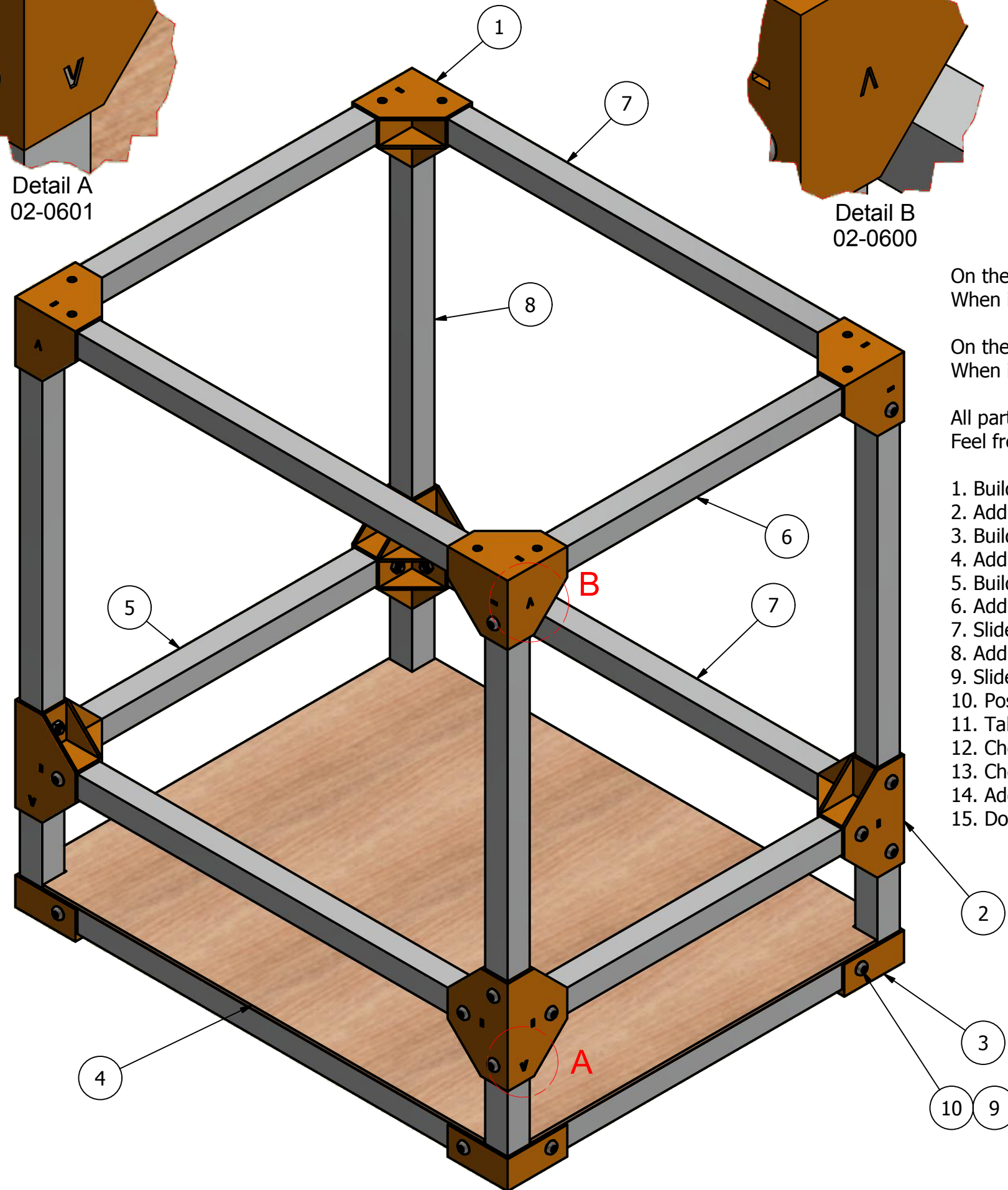


Detail A
02-0601



Detail B
02-0600



Parts List				
POS.	QTY.	PART NUMBER	DESCRIPTION	MATERIAL
1	4	02-0600	Top corner bracket 2.0	PLA Plastic
2	4	02-0601	Frame extender 2.0	PLA Plastic
3	4	02-0602	Foot 2.0	PLA Plastic
4	1	02-0603	Cover bottom 2.0	Wood (Birch)
5	4	20x20x1 L=314	Aluminium extrusion	Aluminum 6061
6	2	20x20x1 L=354	Aluminium extrusion	Aluminum 6061
7	6	20x20x1 L=400	Aluminium extrusion	Aluminum 6061
8	4	20x20x1 L=450	Aluminium extrusion	Aluminum 6061
9	28	DIN 934 - M5	Hex Nut	Stainless Steel
10	28	ISO 7380-1 - M5 x 30	Hexagon Socket Button Head Screw	Stainless Steel

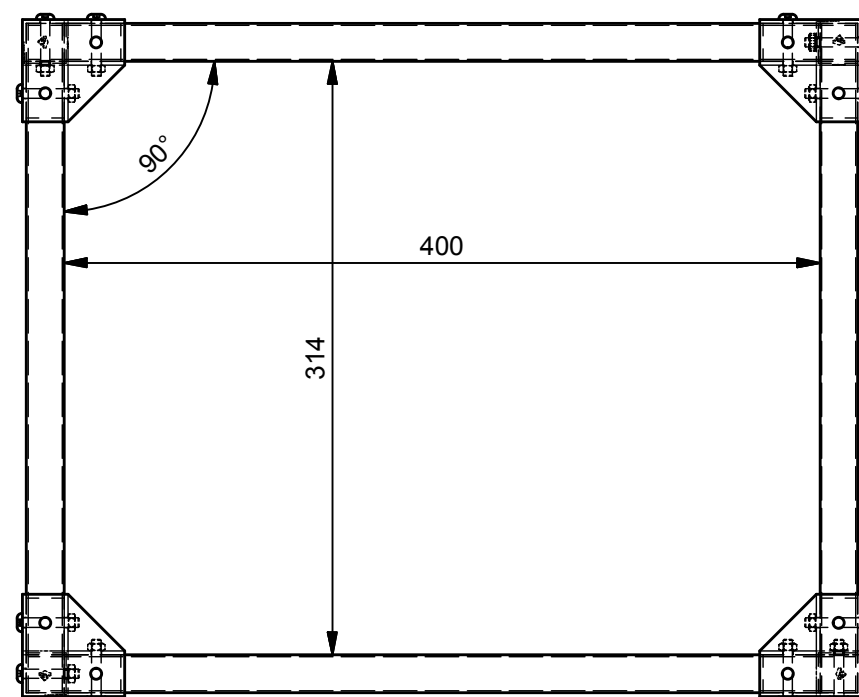
On the part "02-0601 - Frame extender 2.0" is a "V" engraved.
When installing those parts the "V" needs to point to the bottom.

On the part "02-0600 - Top corner bracket 2.0" is a "V" engraved.
When installing those parts the "V" needs to point to the top.

All parts are printed in standard PLA
Feel free to use other products.

1. Build the bottom section (Be sure it is 90° and correct in dimensions)
2. Add the bolts
3. Build the top section (Be sure it is 90° and correct in dimensions)
4. Add the bolts
5. Build the electrical cabinet section (Be sure it is 90° and correct in dimensions)
6. Add the bolts
7. Slide pos 8 into pos 3 (4 times)
8. Add the cover for the bottom
9. Slide the electrical cabinet over pos 8 (do NOT bolt this in position yet)
10. Position the top section over pos 8
11. Take measurements for the height (Be sure it is 90° and correct in dimensions on all 4 corners)
12. Check the dimensions for X and Y on all parts
13. Check if the entire build is level
14. Add bolts to the top section to complete the frame
15. Do a final check on the dimensions, the angles and the level

	Project	Open source		Dimensions In mm (U.N.O.)
	Client	3D Print Creations		Scale
	Internal Rev			No Scale
	Created by	3D_PP	First issue	21-7-2018
Description				Projection
The Hum Box V2 Frame assembly				For Assembly see
Project no.		Chapter - Sheet nr.		Material
Drawing nr.: 3D Printer		02-0000		



Tools needed if you follow the designed build:

Hexagon key for M5

8mm wrench

5mm drill bit

Marker

Center point

Water leveler

90° Angle

If you want to bolt the cover, then you also need:

Drill bit for M5 (since we work with Aluminium, a 4mm drill bit will work just fine)

Tap drill for M5

Since we used other bolts than in the design (Galvanised Phillips Head half rounded M5)

Phillips head screwdriver.

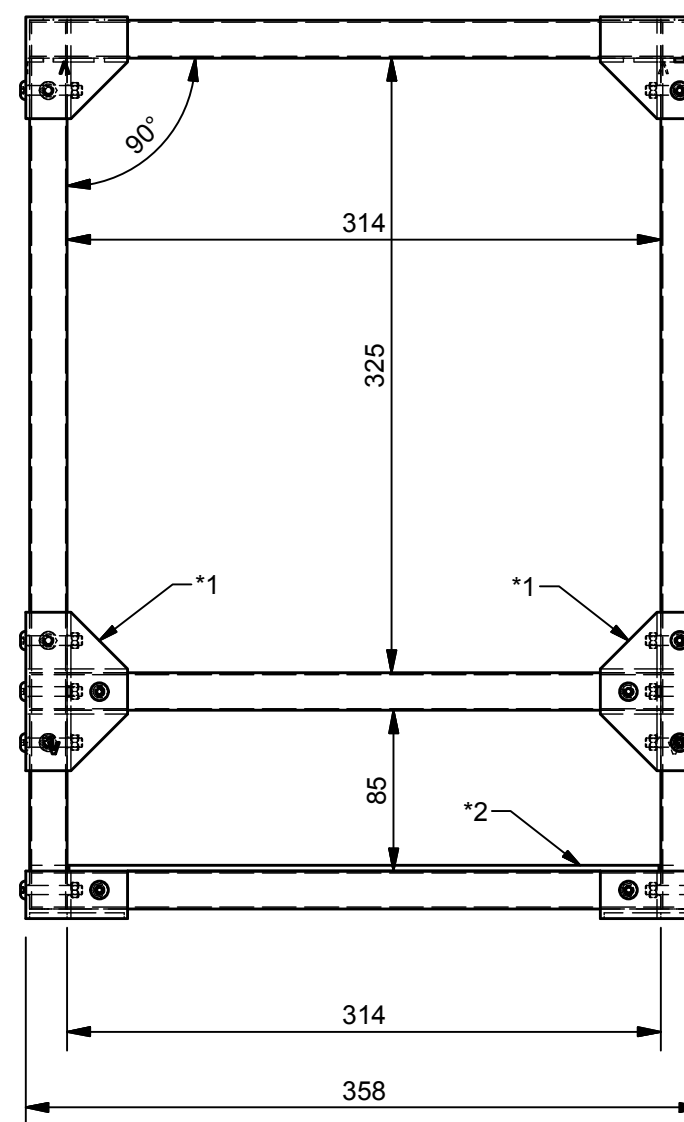
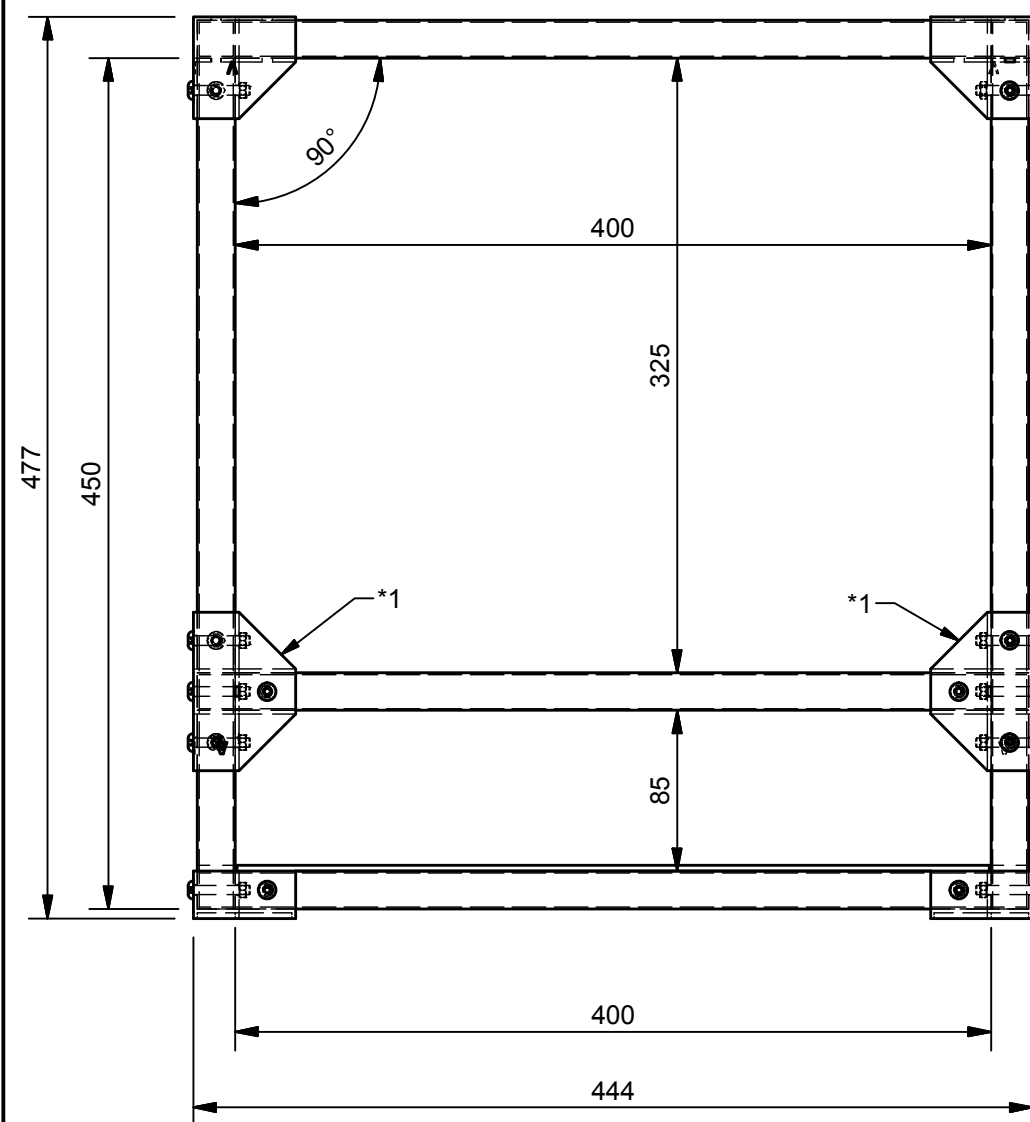
Those screws are much cheaper than the Stainless Steel hex ones.

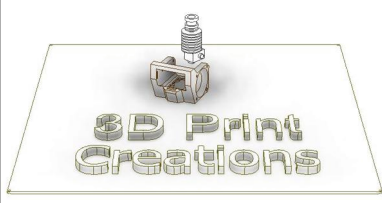
*1

When installing the middle section of the frame, it is advised to NOT bolt it onto the vertical Aluminium extrusions. This will be done in a later state.

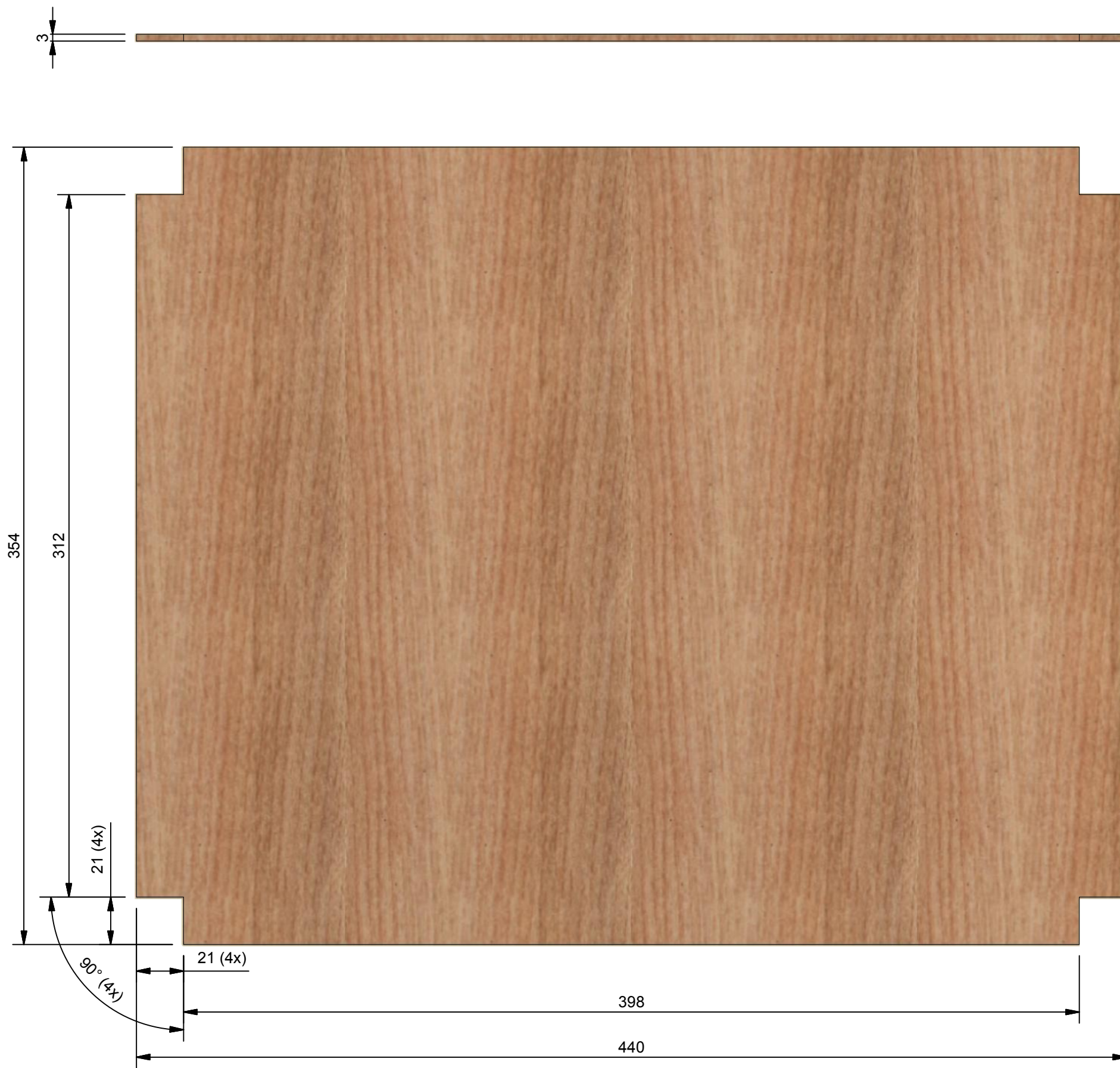
*2

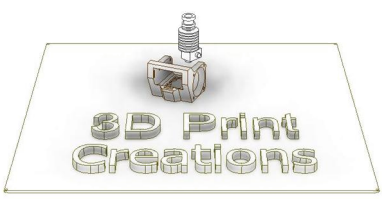
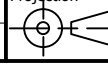
The cover for the bottom is not bolted to the frame, you can do so, if you like that more. Suggested bolts ISO 7380-1 - M5 x 10 (or any other M5 type).



	Project	Open source	Dimensions In mm (U.N.O.)
	Client	3D Print Creations	Scale
	Internal Rev		No Scale
	Created by	3D_PP	Projection
Description		First issue	21-7-2018
The Hum Box V2 Frame assembly		For Assembly see	02-0000
Project no.		Chapter - Sheet nr.	Material
Drawing nr.: 3D Printer		02-0000	

©Copyright 3D Print Creations, all rights reserved.



	Project Open source		Dimensions In mm (U.N.O.)
	Client 3D Print Creations		Scale No Scale
	Internal Rev		Projection 
	Created by 3D_PP	First issue 21-7-2018	
Description The Hum Box V2 Cover bottom 2.0			For Assembly see 02-0000
Drawing nr.: 3D Printer		Chapter - Sheet nr. 02-0603	Material Wood (Birch)

©Copyright 3D Print Creations, all rights reserved.