

3D printed paddles Version 2 parts list. Links should be clickable.
KB9RLW

Screws:

Qty(3) M3 x 3mm

<https://www.amazon.com/dp/B0FJMGKCV2>

Note: The following two links are for a kit of many sizes of metric screws. You may choose to order individual screws instead.

Qty(1) M3 x 16mm

<https://www.amazon.com/dp/B0B135TNJ4>

Qty(3) M3 x 8mm

<https://www.amazon.com/dp/B0B135TNJ4>

Magnets:

10 mm x 2.5 mm

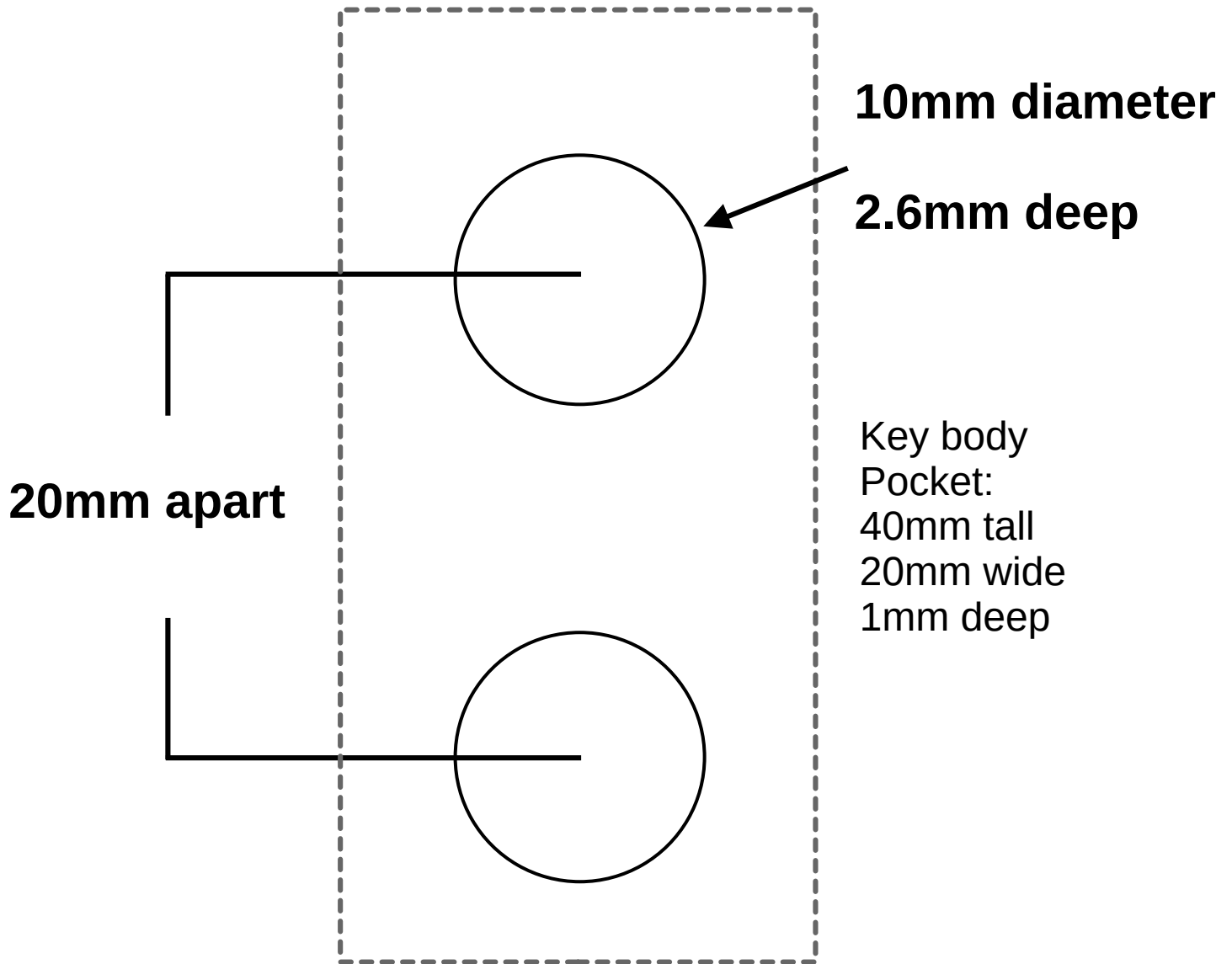
<https://www.amazon.com/dp/B07D8QPG2Y>

Jack:

3.5mm stereo, panel mount

https://www.amazon.com/CESS-Stereo-Balanced-Connector-Chassis/dp/B00ZYWILMS/ref=sr_1_58

Magnet placement details



If modeling your own special mount, create two pockets for the magnets using the above dimensions.