

NBC.11



Build Guide

1:10 scale off-road trailer (Defender 90)



CLICK TO FOLLOW



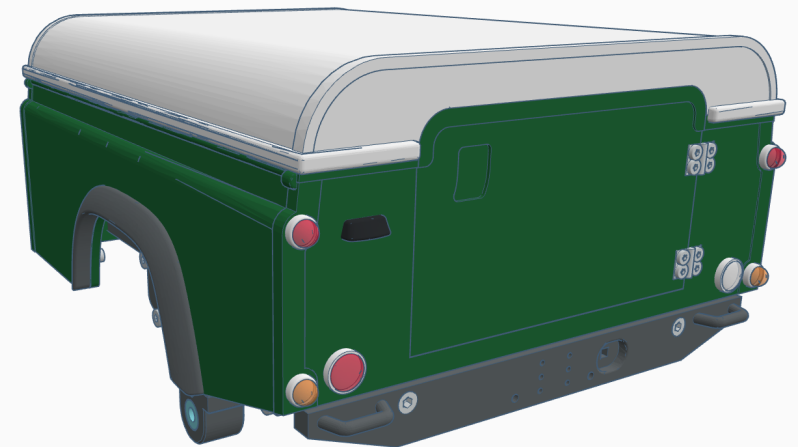
CLICK TO DOWNLOAD



CLICK TO DOWNLOAD

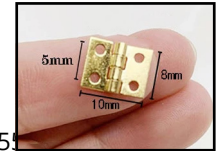


CLICK TO DOWNLOAD



Required hardware

Bearing	4x	5x10x4 mm
Screws (in metric size)		
DIN912 (Hexagon socket head cap screw)	14x	M2x6
	6x	M2x10
	1x	M3x6
	6x	M3x10
	14x	M3x16
	2x	M4x30 (For mounting tires)
Washer	2x	M3 (For mounting tires)
ISO 7380 (Hexagon socket round head screw)	4x	M2x10
Wheels	2x	Crawler, ca. 70 x 25
Hinges	2x	8x10mm (https://www.aliexpress.com/item/10050051)



Notes that do not fit elsewhere

The holes in 007_Body can be used for a wire and tarpaulin cover.

Printing instructions

Almost all the STLs are arranged as they should be printed.

Material - PLA, ABS, PETG

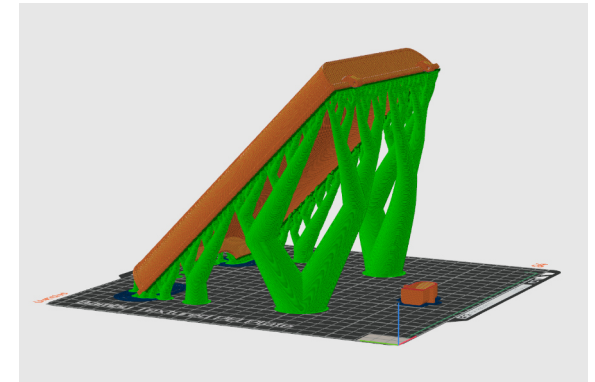
Layer: 0.15mm

Supports: Yes

Infill: 15%

2-3 perimeters.

I printed part 010_Cover.stl at a 45° angle, manually adding tree supports around the perimeter of the part. 3 perimeters.



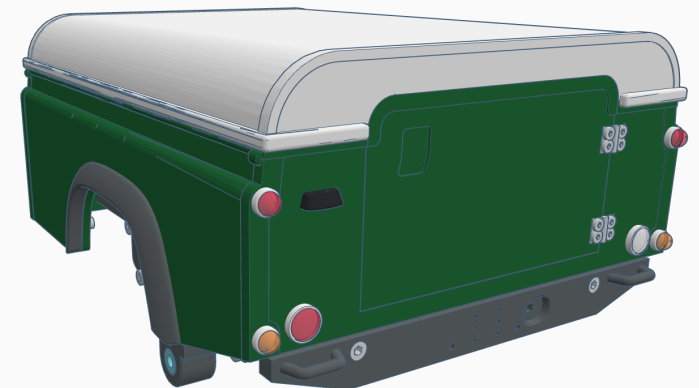
If your prints suffer from elephant foot, the edges need to be cleaned up. Use sandpaper or a sharp knife.

Warranty

The author makes no guarantees for completeness and security. The instructions may contain errors in the description of the procedure and in the list of necessary hardware. The author has taken great care in the creation of the print files, but problems can still occur. The author is not responsible for any issues that may arise.

List of printed parts

Name	Version	Quantity	Additional instructions
001_Drawbar_A.stl		1	
002_Axle_A.stl		1	
002_Axle_B.stl		1	optional
003_Leaf_spring_holder_BC_4x.stl		4	optional
003_Leaf_spring_holder_HT_BC_4x.stl		4	
004_Leaf_spring_holder_FR_L.stl		2	optional
004_Leaf_spring_holder_FR_R.stl		2	optional
004_Leaf_spring_holder_HT_FR_2x.stl		2	
005_leaf_spring_2x.stl		2	
006_Floor.stl		1	
007_Body.stl		1	
008_Fender_Flares_L.stl		1	
008_Fender_Flares_R.stl		1	
009_Door.stl		1	
009_Door_B.stl		1	
010_Cover.stl		1	
011_Bumper.stl		1	
012_Fuel_tank.stl		1	
013_tank_cap.stl		1	
014_Cover_hinge_2x.stl		2	
015_Lamp_base_small_4x.stl		4	
016_Lamp_base_big_2x.stl		2	
017_Lamp_small_4x.stl		4	
018_Lamp_big_2x.stl		2	
019_Axle_A_Hex_12_2x.stl		2	
020_License_plate_lighting.stl		1	
021_door_magnet_holder.stl		1	



Accessories

Download	

Collections

Updates

Date	Assembly step

002_A

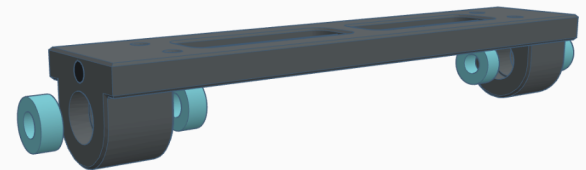
Glue the reinforcement with a diameter of 4mm (carbon, fiberglass or aluminum rod)

1



4x bearings 5x10x4

2

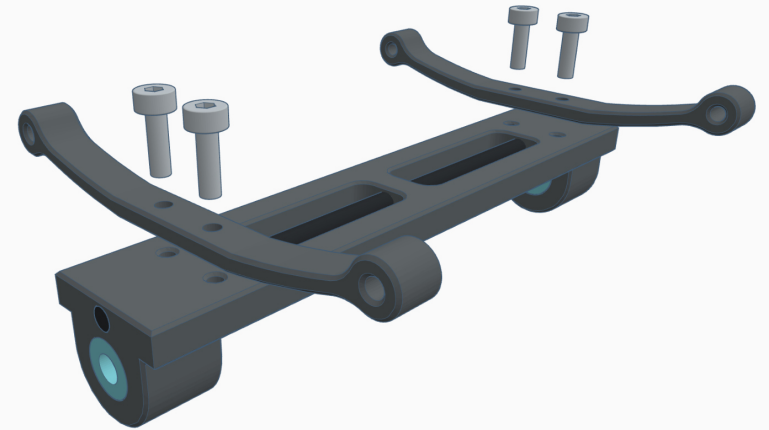


005

4x M3x10

I recommend cleaning the eyelets in the leaf spring with a 3mm drill bit.

3

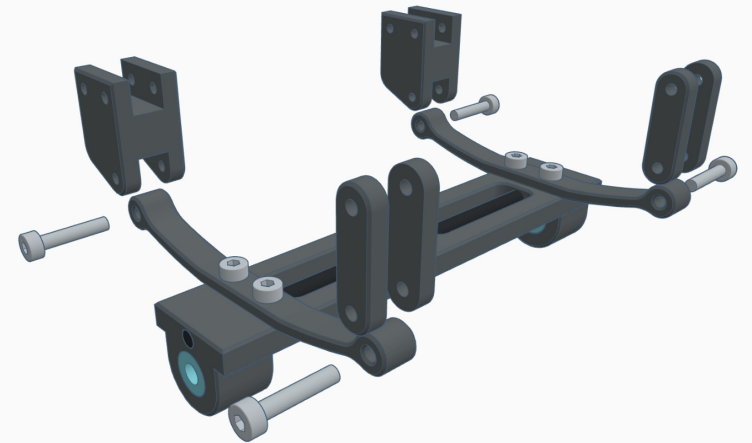


003_HT + 004_HT (or 003 + 004)

4x M3x16

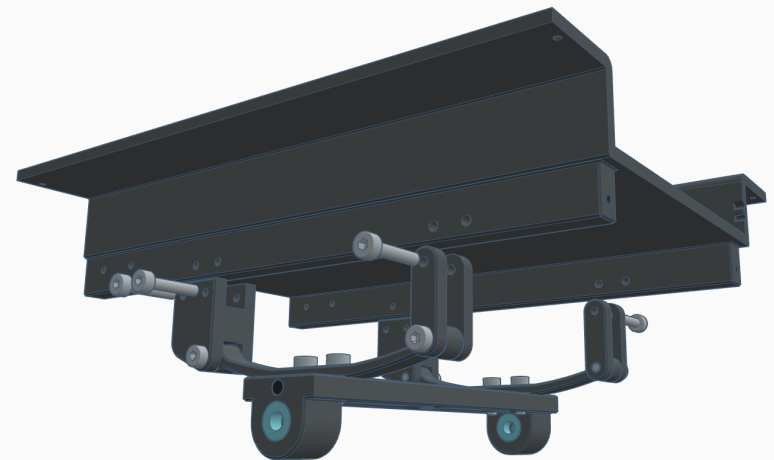
Do not tighten. The leaf spring must rotate freely.

4



006

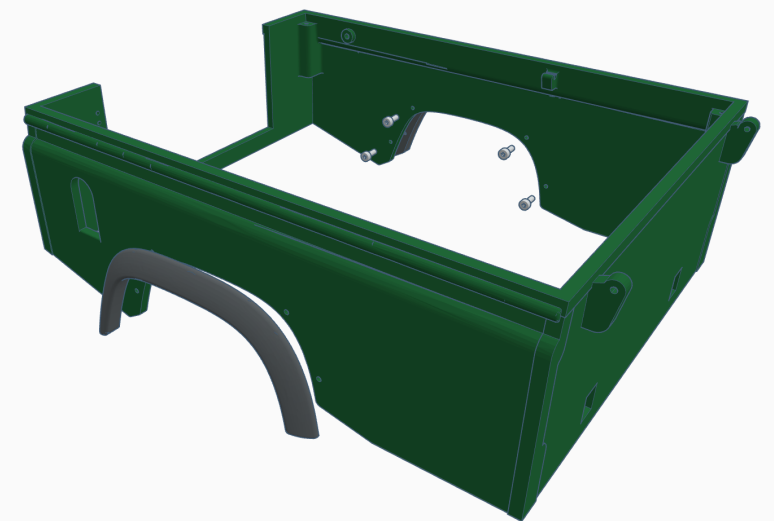
6x M3x16



5

002 + 008

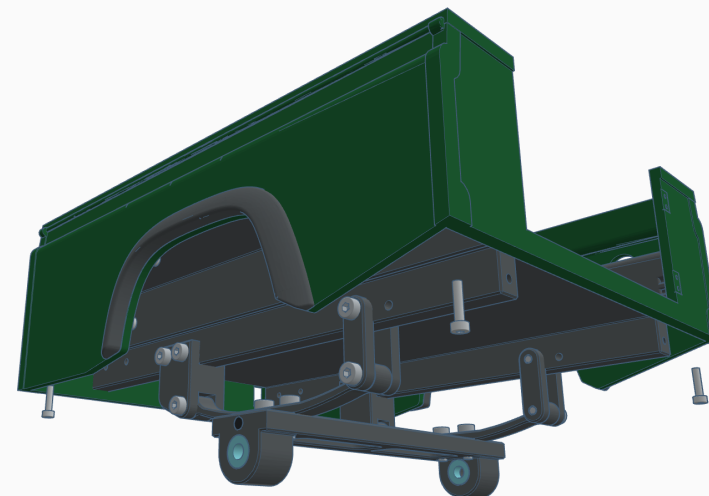
8x M2x6 (Not longer!)



6

4x M2x10

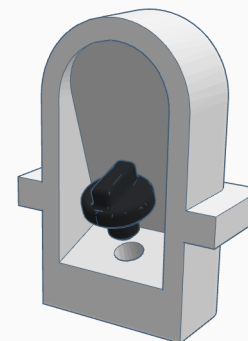
7



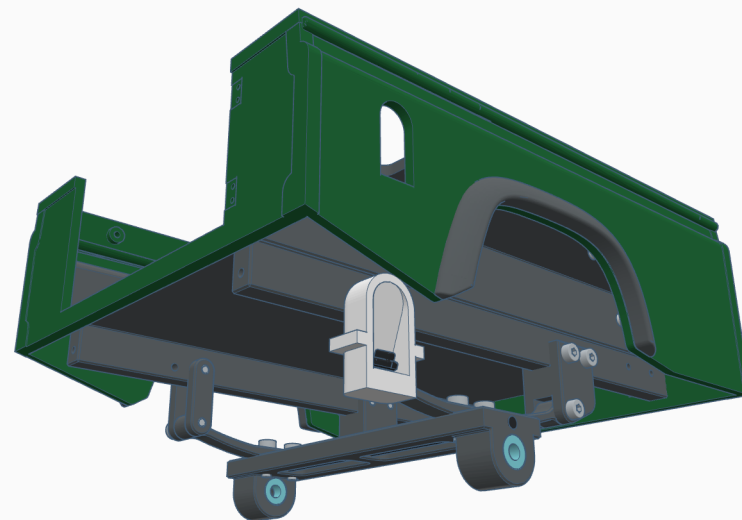
012 + 013

Use a suitable adhesive.

8



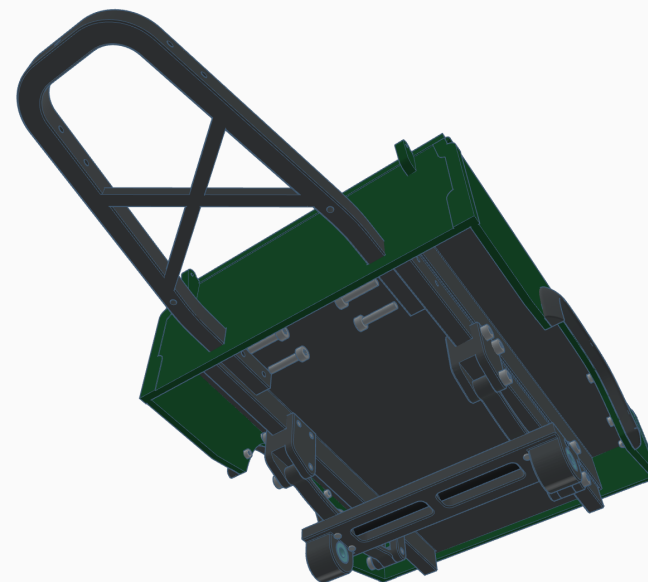
Use a suitable adhesive.



9

001

4x M3x16



10

009

2x Hinges 8x10mm
8x M2x6

Screw the front box from the inside.

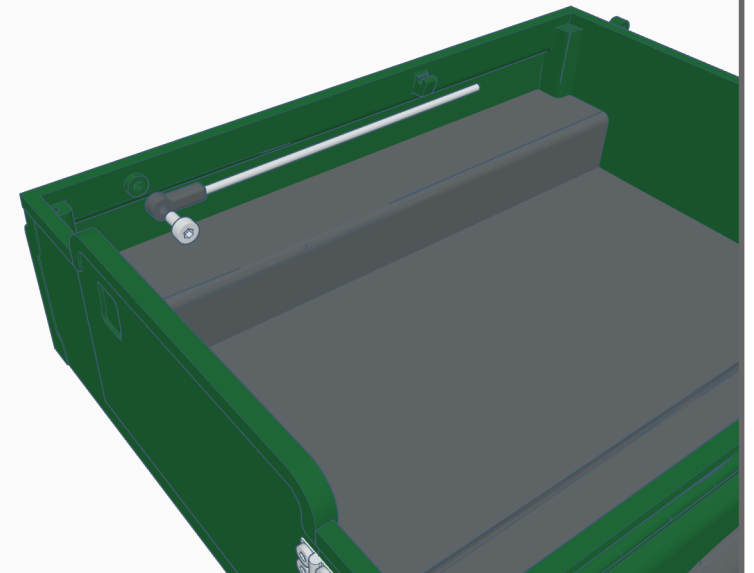
11



014

1x M3x6 (Not longer!)
2mm wire (I used bicycle spoke wire).

12



011

2x M3x10

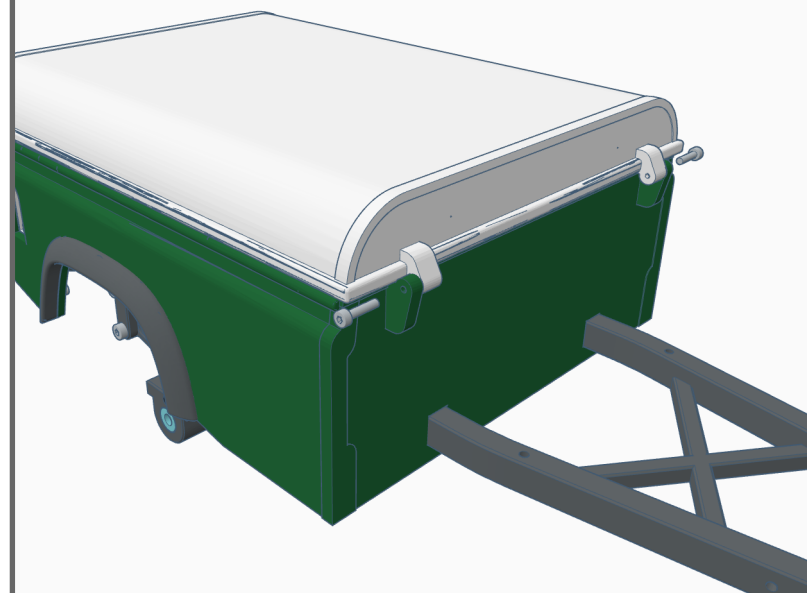


13

010

2x M2x10

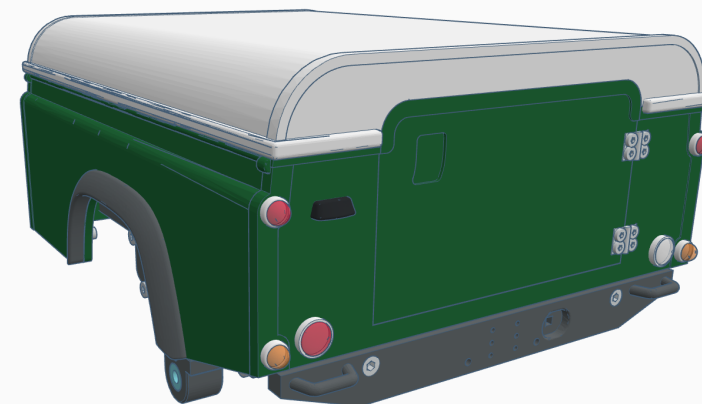
Do not tighten. The cover must rotate freely.



14

014 + 015 + 016 + 017 + 019

Use a suitable adhesive.



15

