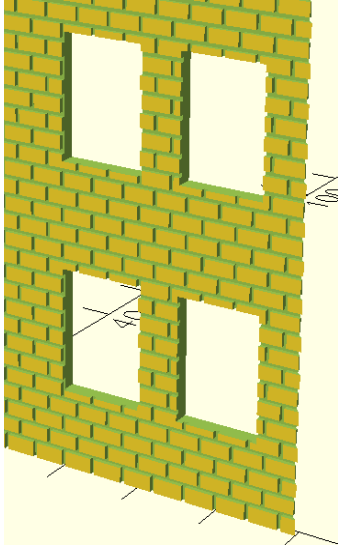


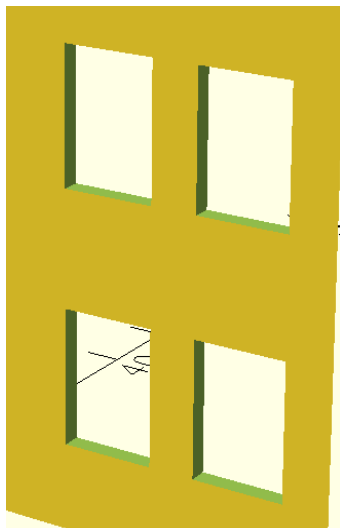
# Assembly Instructions

I kept this model quite simple. So I hope, assembly is clear. :-)

If you want to print this model with stonework on the outer walls, use the files „Part<XX>a (<NAME> w Stonework).stl“, if you want plain outer walls, use the files „Part<XX>b (<NAME>).stl“



with Stonework



plain Walls

If you want a single building, use „Part 11 (broader Roof).stl“. The roof overlaps the outer Walls ~2mm for a nicer look.

If you want to build more buildings adjacent to another, use „Part 11b (fitting Roof).stl“. This roof aligns with the outer walls, so you can glue two or more buildings together.

## Part List

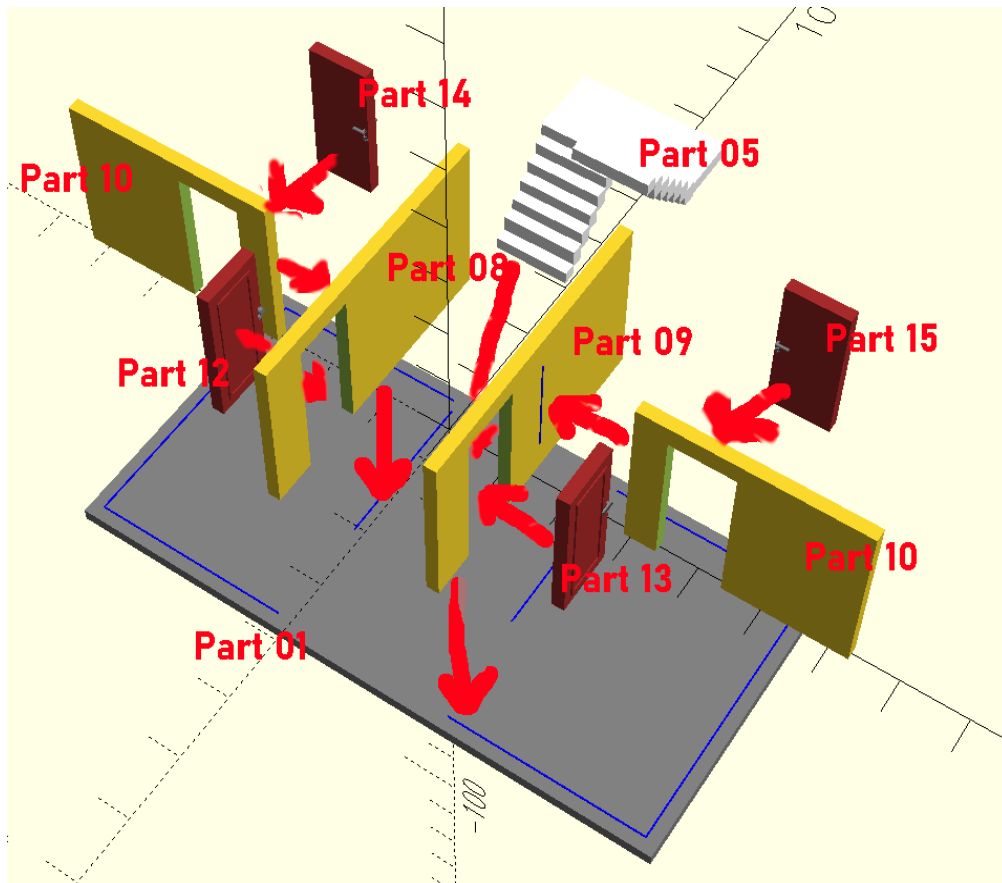
| Part   | Print |
|--|-------|
| Part 01 (Base Plate).stl   | 1x    |
| Part 02a (Front w Stonework).stl<br>- or -<br>Part 02b (Front Plate).stl | 1x    |
| Part 03a (Side w Stonework).stl<br>- or -<br>Part 03b (Side Plate).stl   | 1x    |
| Part 04a (Back w Stonework).stl<br>- or -<br>Part 04b (Back Plate).stl   | 1x    |
| Part 05 (Staircase).stl  | 2x    |
| Part 06 (Balcony).stl  | 4x    |
| Part 07 (Inner Ceiling).stl  | 2x    |
| Part 08 (Hallway left).stl   | 3x    |
| Part 09 (Hallway right).stl  | 3x    |
| Part 10 (Room Wall).stl  | 6x    |
| Part 11a (broader Roof).stl<br>- or -<br>Part 11b (fitting Roof).stl     | 1x    |
| Part 12 (Hallway Door right).stl   | 3x    |
| Part 13 (Hallway Door left).stl  | 3x    |
| Part 14 (Room Door right).stl  | 3x    |
| Part 15 (Room Door left).stl   | 3x    |
| Part 16 (Balcony Door right).stl   | 3x    |
| Part 17 (Balcony Door left).stl  | 3x    |
| Part 18 (Entrance Door left).stl   | 1x    |
| Part 19 (Entrance Door right).stl  | 1x    |
| Part 20 (Front Window).stl   | 12x   |
| Part 21 (Staircase Window).stl   | 4x    |
| Part 22 (Back Window).stl  | 6x    |

# At First

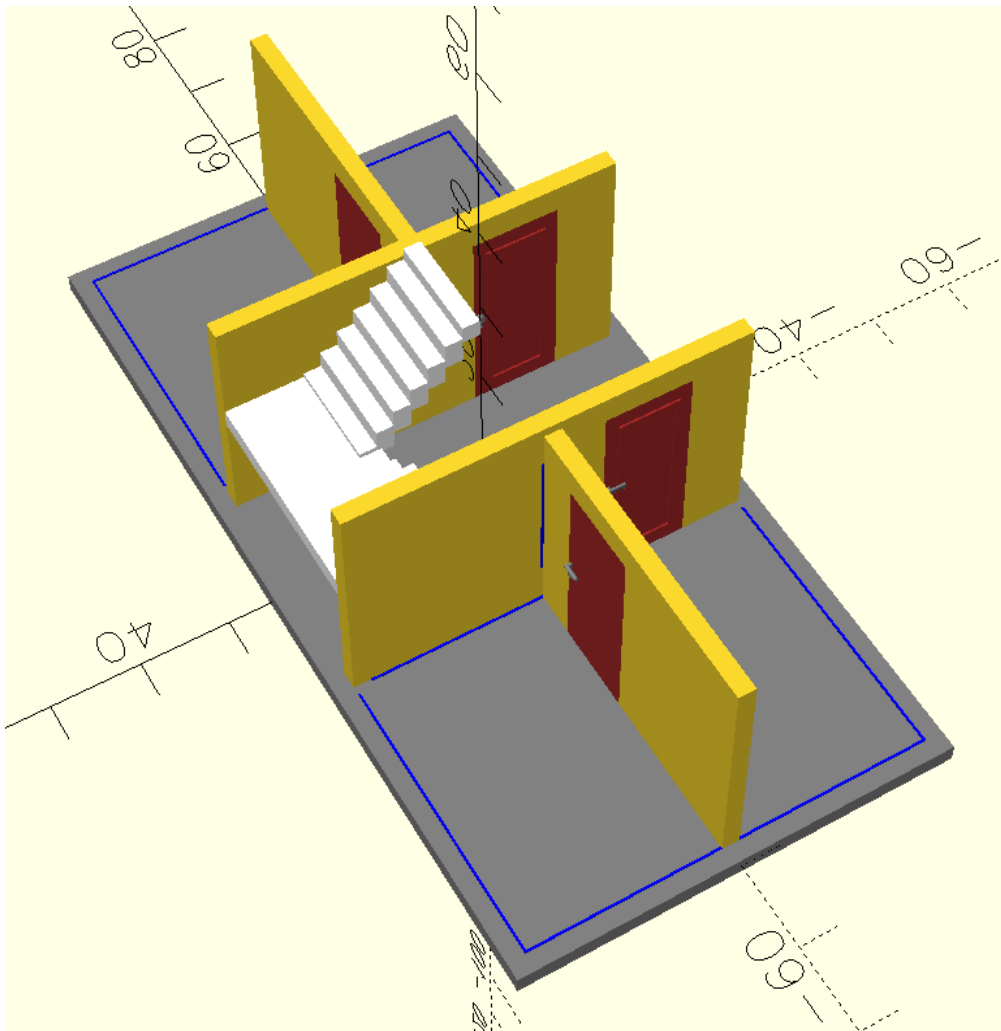
Paint the Windows and Doors as you like. Glue transparent film into the Windows and Doors as window pane.

Paint the outer Walls and the Roof as you like.

## Base Floor

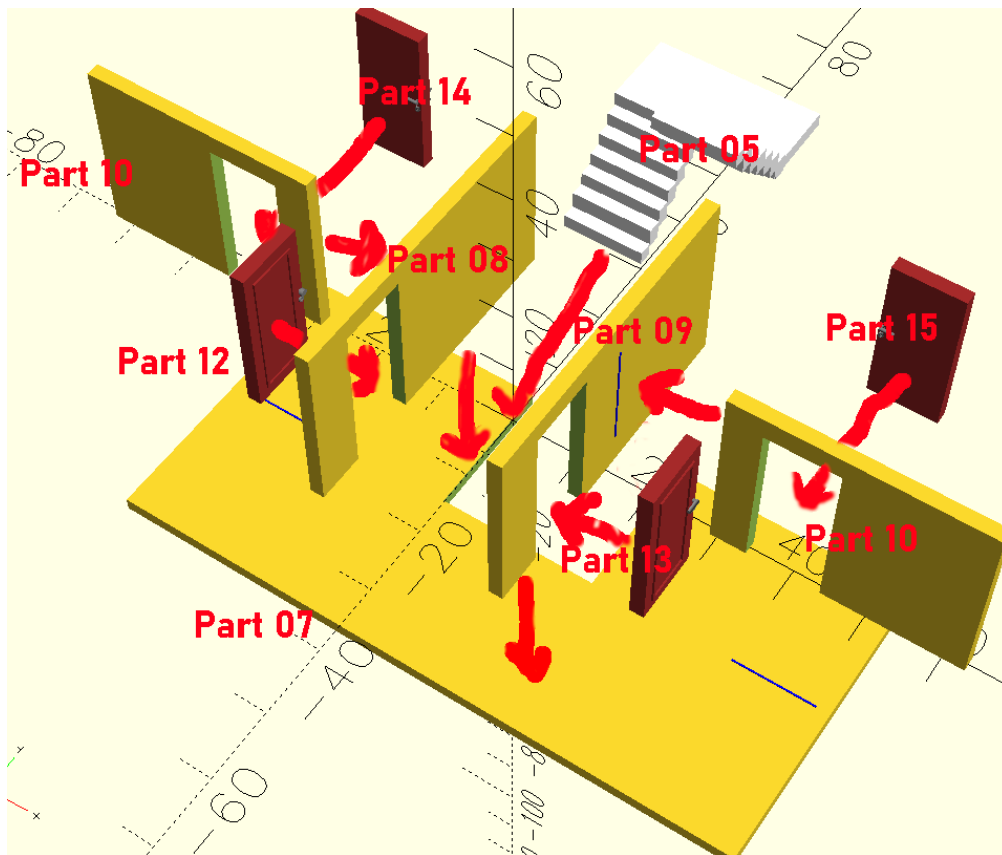


1. Paint the doors and the staircase as you like
2. Glue the doors into the walls. The doors to the hallway should face with the knobs to the hallway, the handle to the room.
3. Glue the hallway walls (Parts 08 and 09) to the Baseplate (Part 01), the guiding line (blue) should be on the back of the hallway walls (visible inside the room of the flat).
4. Glue the room walls to the hallway walls, the guidance line should be visible from the back room.
5. Glue the walls to the base plate
6. Glue the staircase into the hallway, make sure, the platform aligns with the hallway walls.
7. Now it's a good time to paint and/or decorate the walls as you like and set lights as you want.

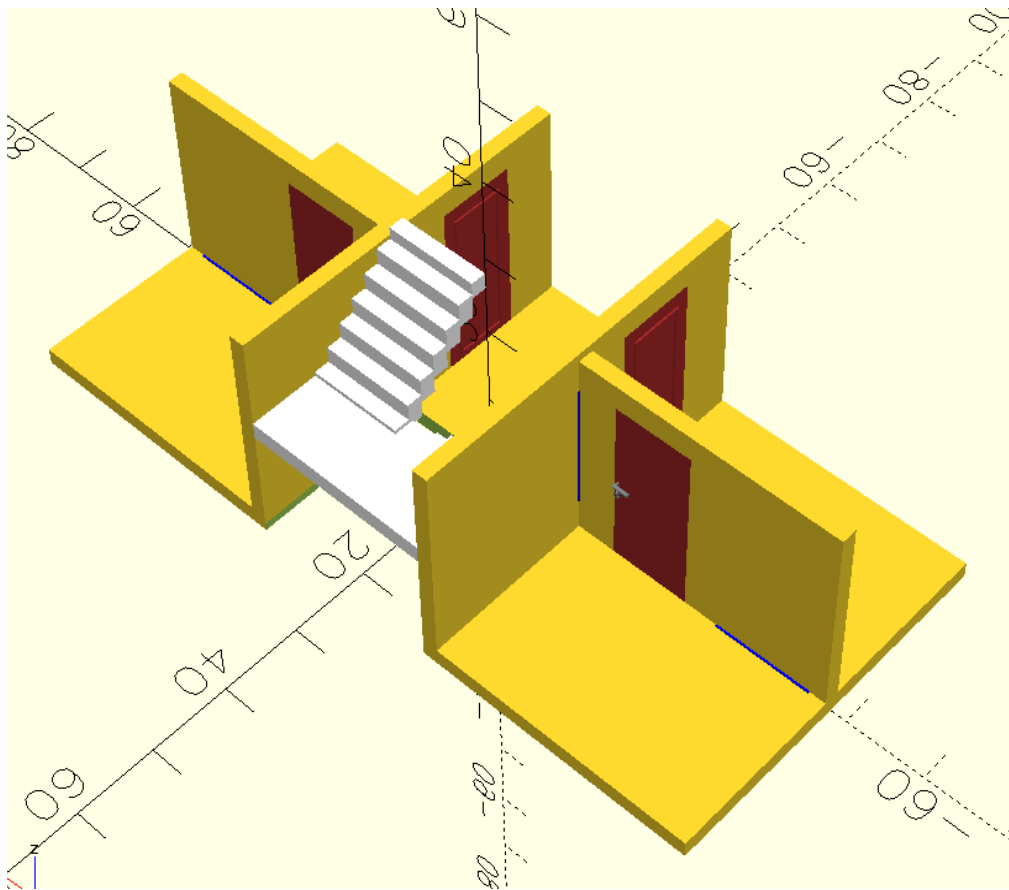


Base floor final assembly

## Upper Floor

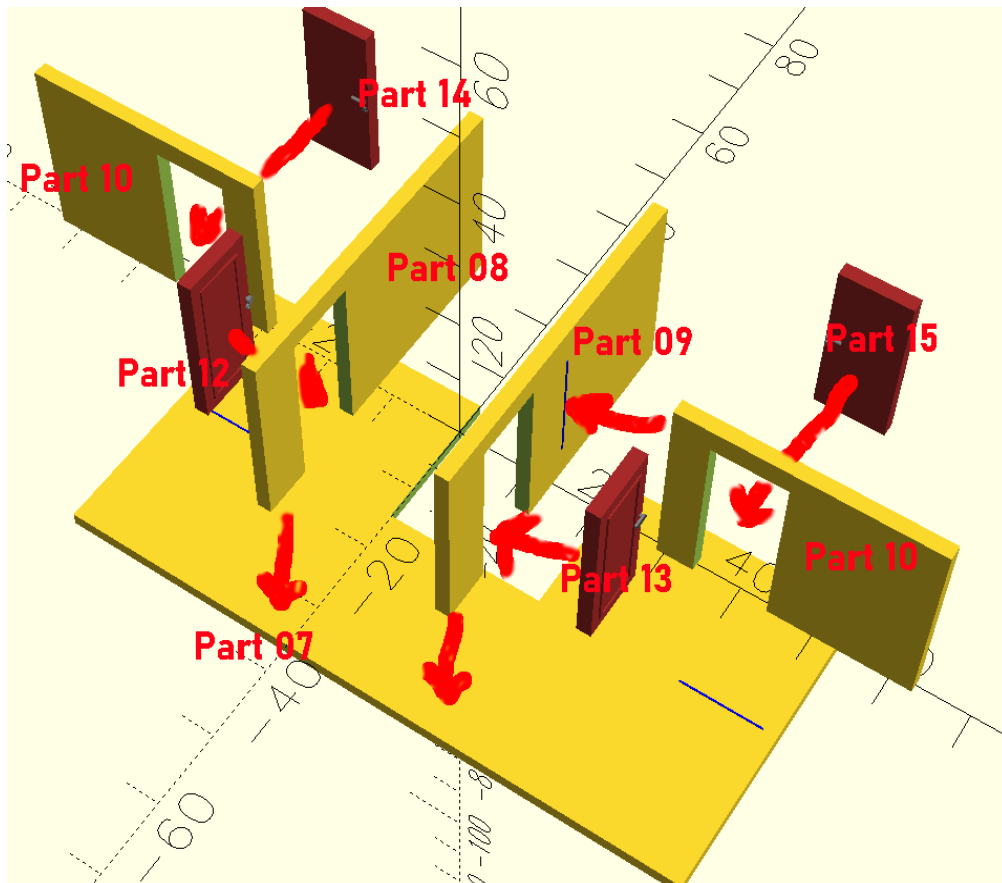


1. Paint the doors and the staircase as you like
2. Glue the doors into the walls, the knobs of the doors to the hallway should face the hallway, the handle inside the room.
3. Glue the walls to the hallway on the ceiling, aligning the walls with the hole for the staircase
4. Glue the room walls to the walls to the hallway and the ceiling, the guideline should face to the back room.
5. Glue the staircase on the ceiling, make sure the platform aligns with the walls.
6. Now it's a good time to paint and/or decorate the walls as you like and set lights as you want.

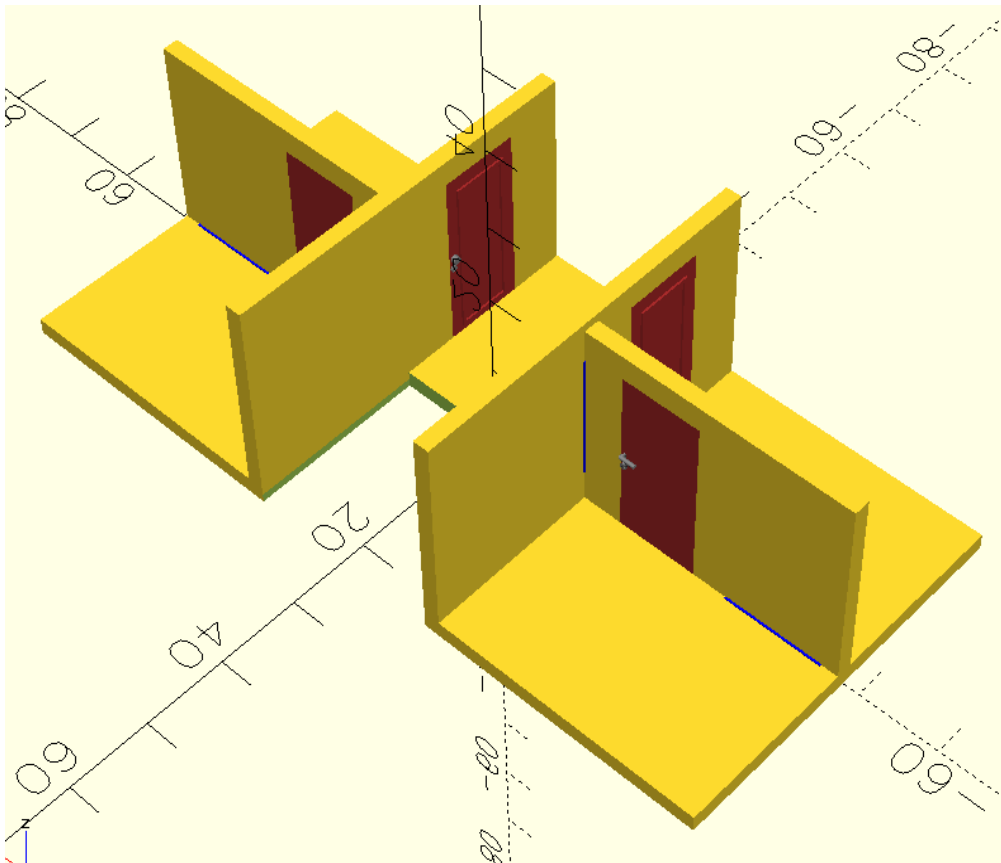


Upper floor final assembly

## Top Floor



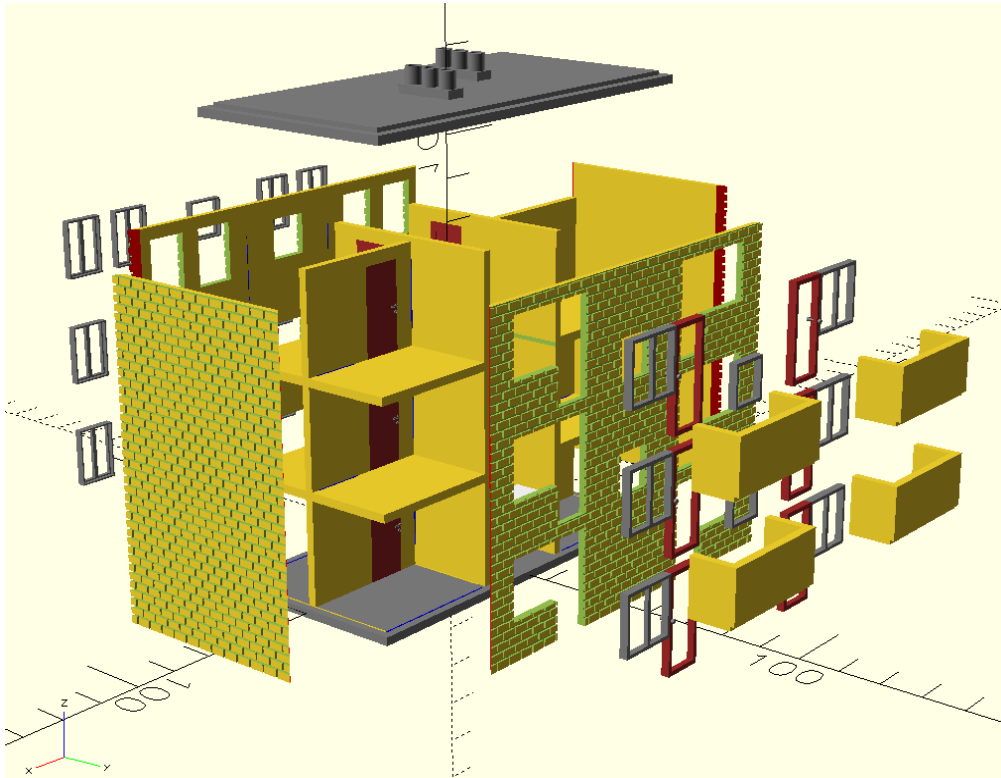
Assembly is the same as the upper floor, except there's no staircase.



Top floor final assembly

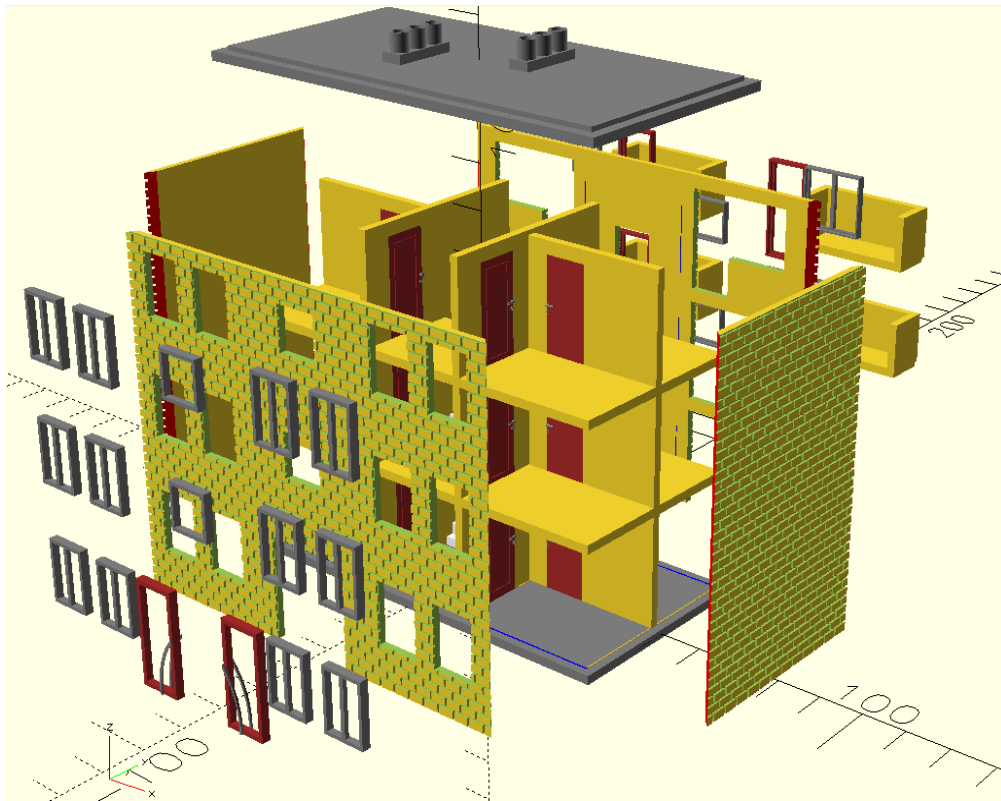
# Final Assembly

Before you start with the final assembly, it's good to check, if all decorations, lights and cables are in place and camouflaged as you want. You also should test the lighting before you glue the parts of the building together.

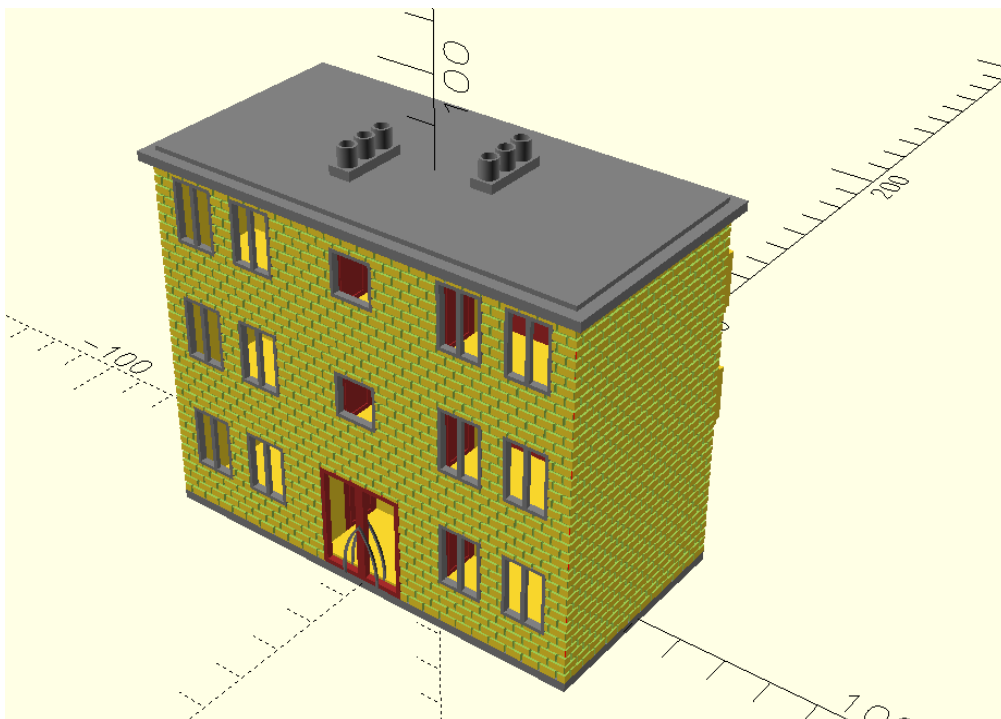


1. Glue the upper floor on top of the base floor, make sure that all walls align with the lower walls and the ceiling.
2. Glue the top floor on top of the upper floor, make sure that all walls align with the lower walls and the ceiling.
3. Paint windows and doors, and glue transparent film into the windows and doors
4. Glue the windows and doors into the rear wall. Knobs of the doors should face outside and to the windows.
5. Glue the balconies to the upper and top floors on the back. The floor of the balcony should align with the lower of the door.
6. Glue the back wall to the base plate, walls and ceilings, make sure it aligns with the baseplate and walls.
7. Glue the left wall to the building, align it with the base plate and the rear wall.

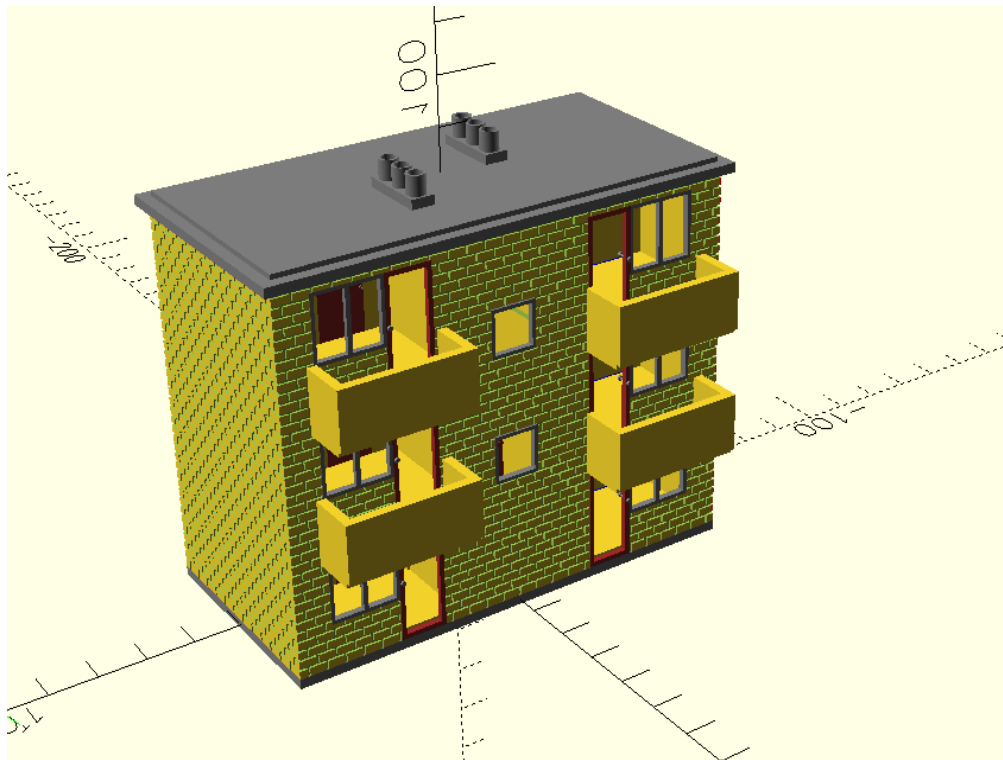




8. Glue the windows and doors into the front wall
9. Glue the right wall to the building, align it with the base plate and the rear wall
10. Glue the front wall to the building, align it with the baseplate, left and right wall
11. Glue the roof to the building.



Front View



Back View