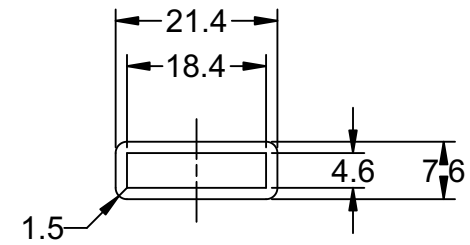
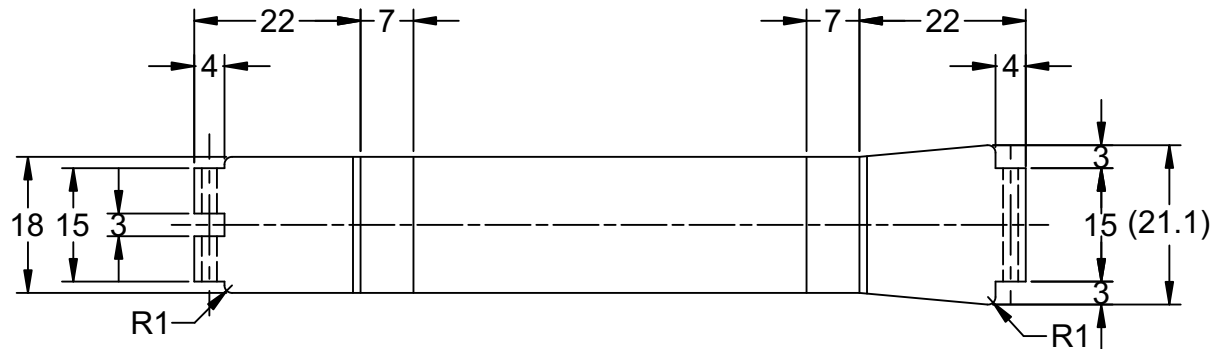
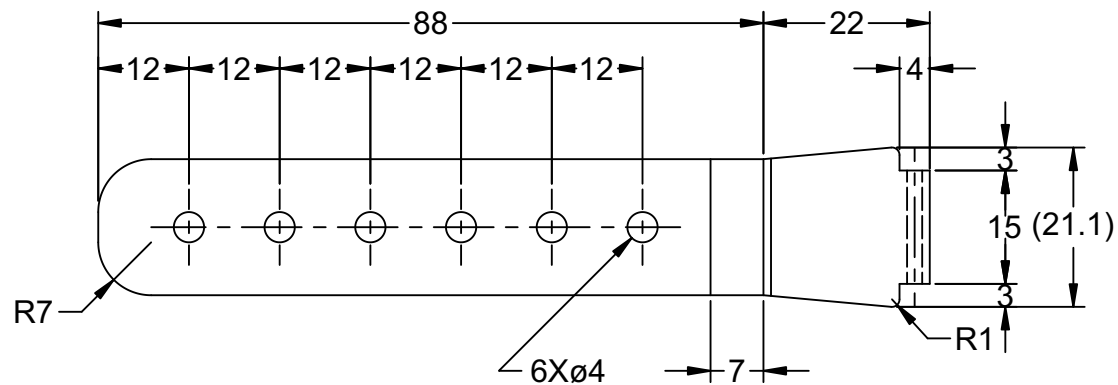
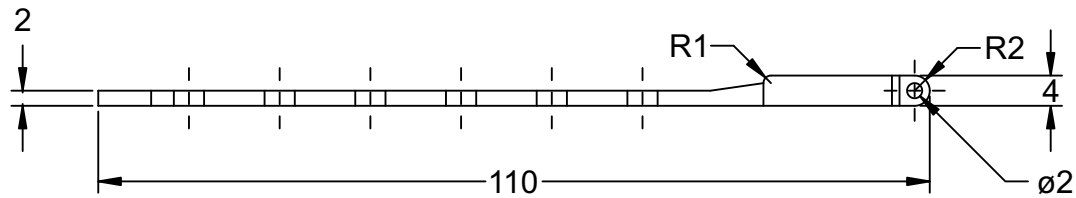


Technical drawing of a shaft with two bearings. The shaft has a total length of 110. It features two bearings, each with an inner diameter of 4 and an outer diameter of 2. The distance between the bearing centers is 110. The shaft has a diameter of 2. The bearings are labeled R1 and R2. The shaft is shown in a cross-section view with a centerline.



STRAP: ADJUSTMENT SIDE



Drawn by:
ALLISON GONZALES

Title	TPU WATCH STRAP
-------	-----------------

project no:	1
Scale:	1:1
revision:	1.3
date:	08/05/2023

Drawing: 1 OF 1